

# Morning Starters: Spring 2 - The Deep

## Word Challenge

The word 'siphonophore' can be broken down into 4 syllables.

**Example:** si-pho-no-phore

**Make a list of all the 4-syllable words that appear in the 'Did you know?' paragraph.**

## Grammar Challenge

Click text to edit 

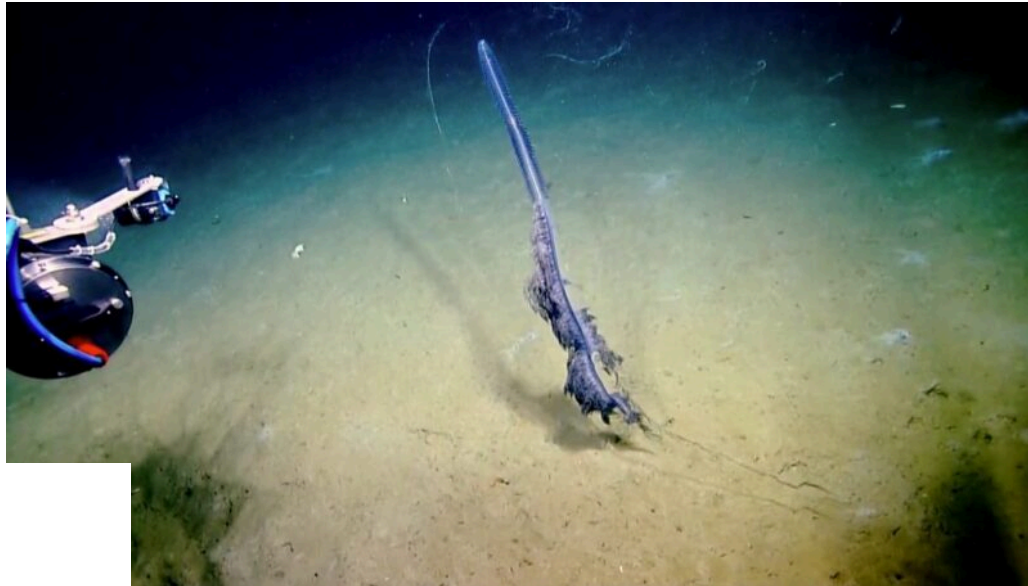
**Copy and complete the sentence starter below, continuing the use of personification.**

The deep sea whispered ...

**Example:** The deep sea whispered its lullaby to the drifting jellyfish.

## Did You Know?

In 2020, the world's longest creature was discovered in a deep ocean canyon off Australia. The otherworldly, string-like siphonophore was over 100 metres long. The creature isn't, strictly speaking, one animal. Instead, it is a type of 'colonial' animal that is made of many single organisms attached to each other. Different parts have different jobs, like feeding or reproducing, and the parts can't survive without each other.



Credit: BBC Earth

## Number Challenge

A deep-sea exploration submarine starts its dive from the surface to the ocean floor, which is at a depth of 6,000 metres. During its descent, the submarine descends at a rate of 100 metres every 30 seconds.

**How long will it take the submarine to reach the ocean floor?**

## Critical Thinking

**Which groups do you belong to? Which group do you have the greatest sense of belonging to?**

Monday

Tuesday

Wednesday

Thursday

Friday