

Morning Starters: Summer 2 - Teamwork (2)

Word Challenge

Copy and correct the words (listed below) that have a spelling error:

- 1) variaty
- 2) colonies
- 3) spesific
- 4) socieble

Grammar Challenge

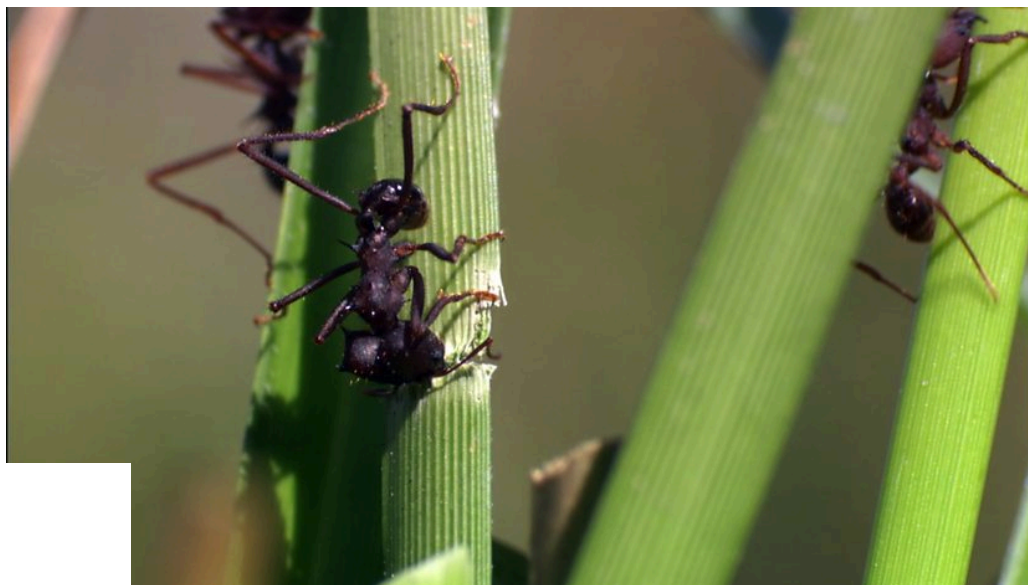
Click text to edit 

Rewrite the following sentence with alternative expanded noun phrases to the ones underlined.

The formidable soldiers guarded their leaf-covered nest, while numerous busy workers harvested food.

Did You Know?

Leaf cutter ants are the ultimate team players. They live together in colonies, which can contain up to ten million ants. Each ant has a specific job to help the colony thrive. Workers collect leaves, soldiers protect the colony from attack and farmers grow fungus for food. This variety of roles makes them one of the most organised animal species on the planet.



Credit: BBC Two - Wonders of Nature

Number Challenge

If each soldier ant can protect 500 worker ants, how many soldier ants are needed to protect a colony that contains 2.5 million worker ants?

Critical Thinking

Which teams do you belong to? Do you have a specific role to play in any of these teams?

Monday

Tuesday

Wednesday

Thursday

Friday