

# Morning Starters: Summer 1 - Strange but True

## Word Challenge

**Compile a list of synonyms for the word 'eating.'**

**Note:** A synonym is a word that has the same or nearly the same meaning as another word.

## Grammar Challenge

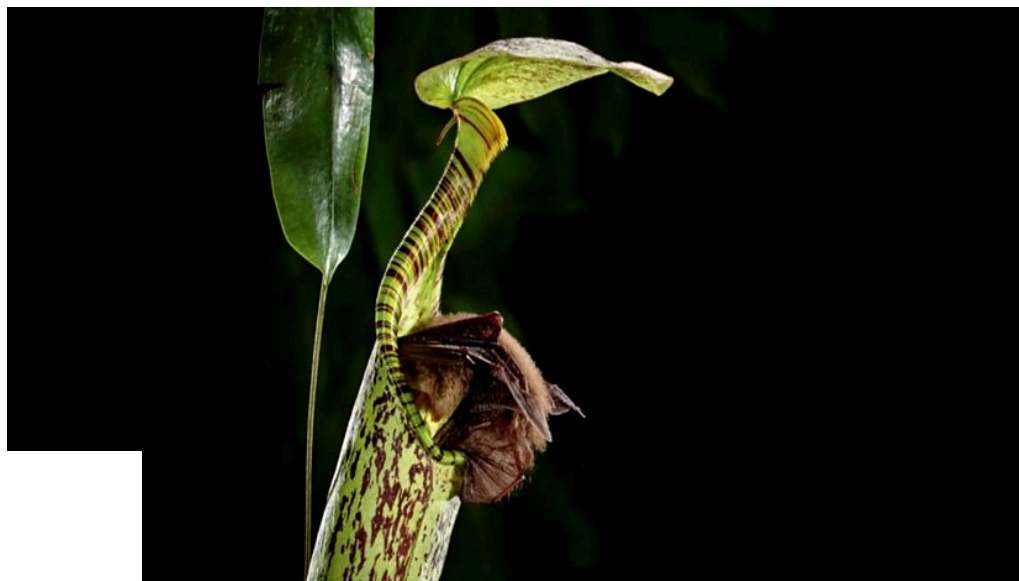
Click text to edit 

**Write a descriptive sentence that follows on from the sentence below.**

The curious bat crawled into the plant's funnel-shaped trap.

## Did You Know?

A pitcher plant gains extra nutrition by devouring insects. When an insect crawls into the plant's bowl-shaped body, enzymes dissolve and absorb its soft body parts. Mysteriously, in the forests of Borneo, one unusual species of pitcher plant is attracting a much larger animal. Could it be possible that a plant is able to digest a bat? Watch the clip to find out.



Credit: BBC Two - Nature's Weirdest Events

## Number Challenge

- There are currently around 630 species of carnivorous plant known to science.

**List the factor pairs of 630.**

**Example:** 315 and 2  
because  $315 \times 2 = 630$

## Critical Thinking

**Why do you think some plants have evolved to eat insects while others have not?**

Monday

Tuesday

Wednesday

Thursday

Friday