


Morning Starters: Autumn 2 - Mountain Mammals

Word Challenge

The word 'secretive' has got 3 syllables – se/cre/tive.

List all of the 3-syllable and 4-syllable words that you can find on this page.

Grammar Challenge

Click text to edit 

Rewrite the sentence below with an alternative fronted adverbial.

Peering down from a craggy rock ledge, the snow leopard was searching for a mate.

e.g. Tirelessly, the snow leopard was searching for a mate.

Clip Description

Meet the magnificent snow leopard as it marks its mountain territory. Seldom seen by humans, this secretive big cat has earned the nickname – Ghost of the Mountains. Adult snow leopards will spend an almost solitary existence in search of food and a mate.



Number Challenge

Each year, climate change can reduce a snow leopard's territory by 10%.

If a snow leopard's territory was 800 km² in 2024, what might the size of its territory be in 2027?

Critical Thinking

Why do you think mountains have been considered sacred places by many people throughout history?

Monday

Tuesday

Wednesday

Thursday

Friday



Built with the support of ERA

Use of the clips on this site in the classroom requires an [ERA](#) Licence. Use of the clips for home learning requires a TV Licence.


Morning Starters: Autumn 2 - Mountain Mammals

Word Challenge

The word 'secretive' has got 3 syllables – se/cre/tive.

List all of the 3-syllable and 4-syllable words that you can find on this page.

Grammar Challenge

Click text to edit 

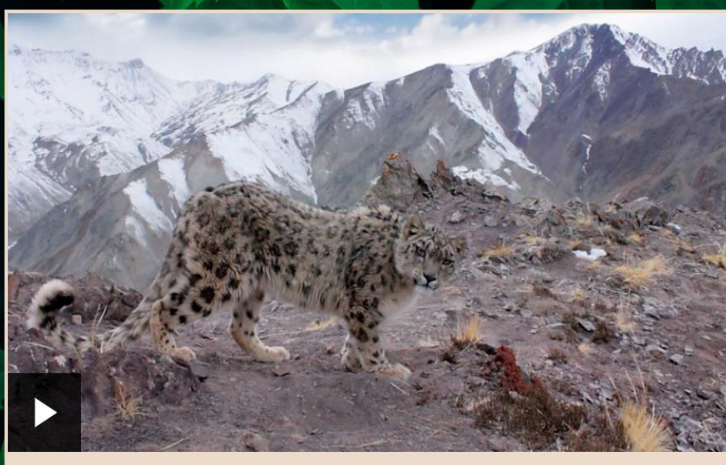
Rewrite the sentence below with an alternative fronted adverbial.

Peering down from a craggy rock ledge, the snow leopard was searching for a mate.

e.g. Tirelessly, the snow leopard was searching for a mate.

Clip Description

Meet the magnificent snow leopard as it marks its mountain territory. Seldom seen by humans, this secretive big cat has earned the nickname – Ghost of the Mountains. Adult snow leopards will spend an almost solitary existence in search of food and a mate.



Number Challenge

Each year, climate change can reduce a snow leopard's territory by 10%.

If a snow leopard's territory was 800 km² in 2024, what might the size of its territory be in 2027?

Critical Thinking

Why do you think mountains have been considered sacred places by many people throughout history?

Monday

Tuesday

Wednesday

Thursday

Friday



Built with the support of ERA

Use of the clips on this site in the classroom requires an [ERA](#) Licence. Use of the clips for home learning requires a TV Licence.